



We specialize in the digitization of rail transport, with a specific focus on **Asset Management and Maintenance**.

6+ years

approx.

# 2M

in annual  
revenue

**VDB &  
BITMi**  
member

located in

**Frankfurt**  
Germany

15+

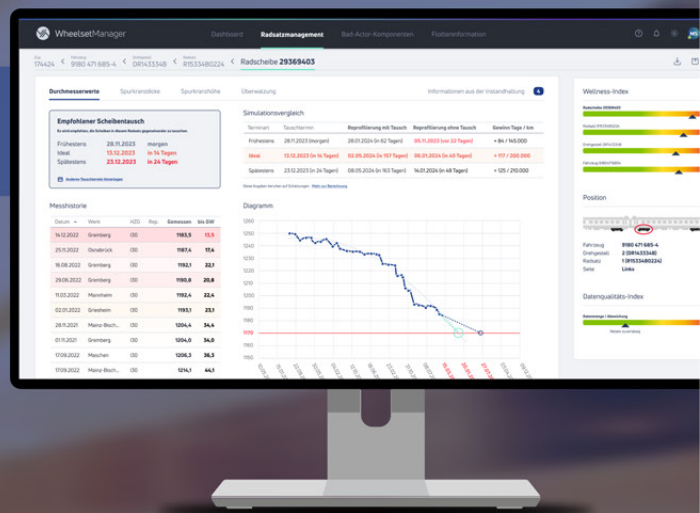
**employees  
and growing**

## Our Featured Product

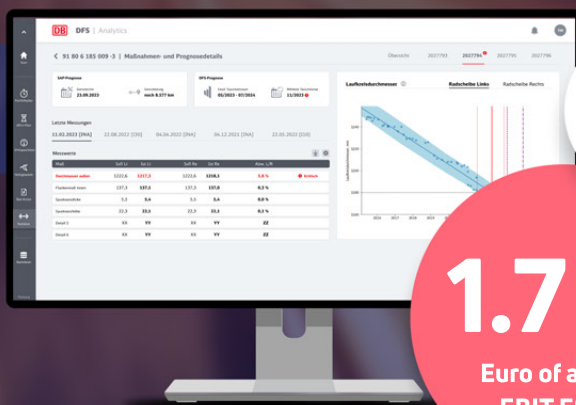
# Wheelset Management

Cut your expenses and make your vehicles more available and reliable by:

- Improving material demand management to **avoid long vehicle downtimes**
- Visualizing and understanding material wear to **shorten future maintenance stops**
- Reducing material wear of the wheelset due to **intelligent operational recommendations**



**The use of sensors is optional but not required!**



1.7 M

### Euro of annual EBIT Effect

## Customer Success Story

## Significant cost savings

As part of the Digital Fleet Management project, we successfully **reduced costs** and **enhanced the efficiency** of wheelset management for **DB Cargo AG**.



**Feel welcome to reach out to us.  
We are here and ready to talk!**

**Marc Schmerbach**, CEO Track Forward GmbH



TrackForward