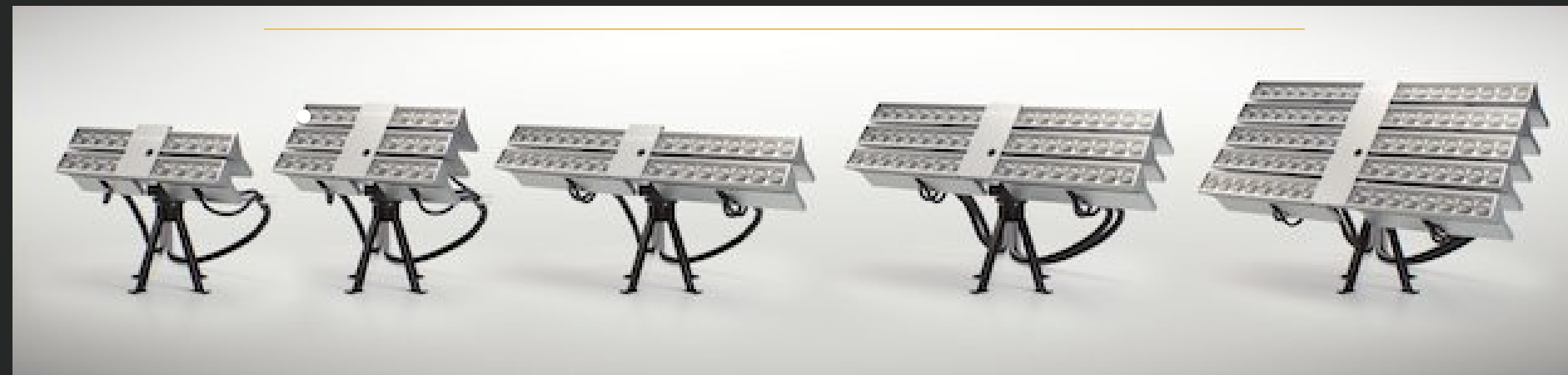
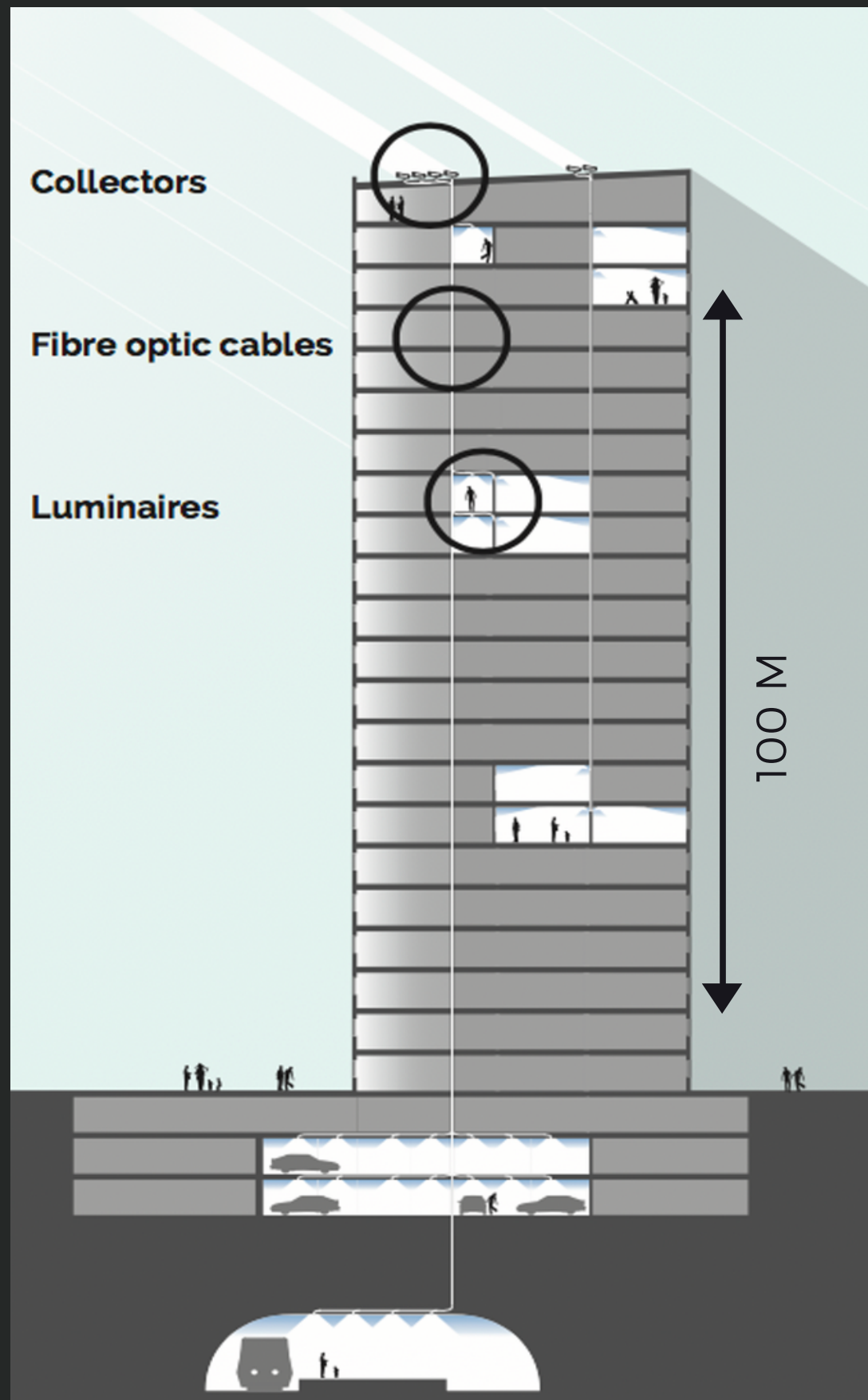




POTIONS

LEADING NATURAL SUNLIGHT DEEP INTO BUILDINGS

Getting daylight into all parts of a building





Sustainable architecture with human centric lighting

- Provide full spectrum light
- Increased property value (attract tenants)
- Solve daylight requirements (lux levels)
- Close to zero energy consumption (decreased carbon footprint)
- Increased workplace productivity
- Wellbeing & supports the natural bodyclock