

A close-up photograph of a vibrant green leaf with several clear, glistening water droplets of varying sizes. The background is a soft-focus green, creating a fresh and natural atmosphere.

WELCOME



**GELSENWASSER**

# WE ARE SPECIALISTS FOR WATER, WASTEWATER, ENERGY AND SUSTAINABLE INFRASTRUCTURE

WE HAVE BEEN SUPPLYING PEOPLE AND  
INDUSTRY THROUGHOUT GERMANY WITH WATER,  
ENERGY AND OTHER SERVICES FOR OVER 130  
YEARS



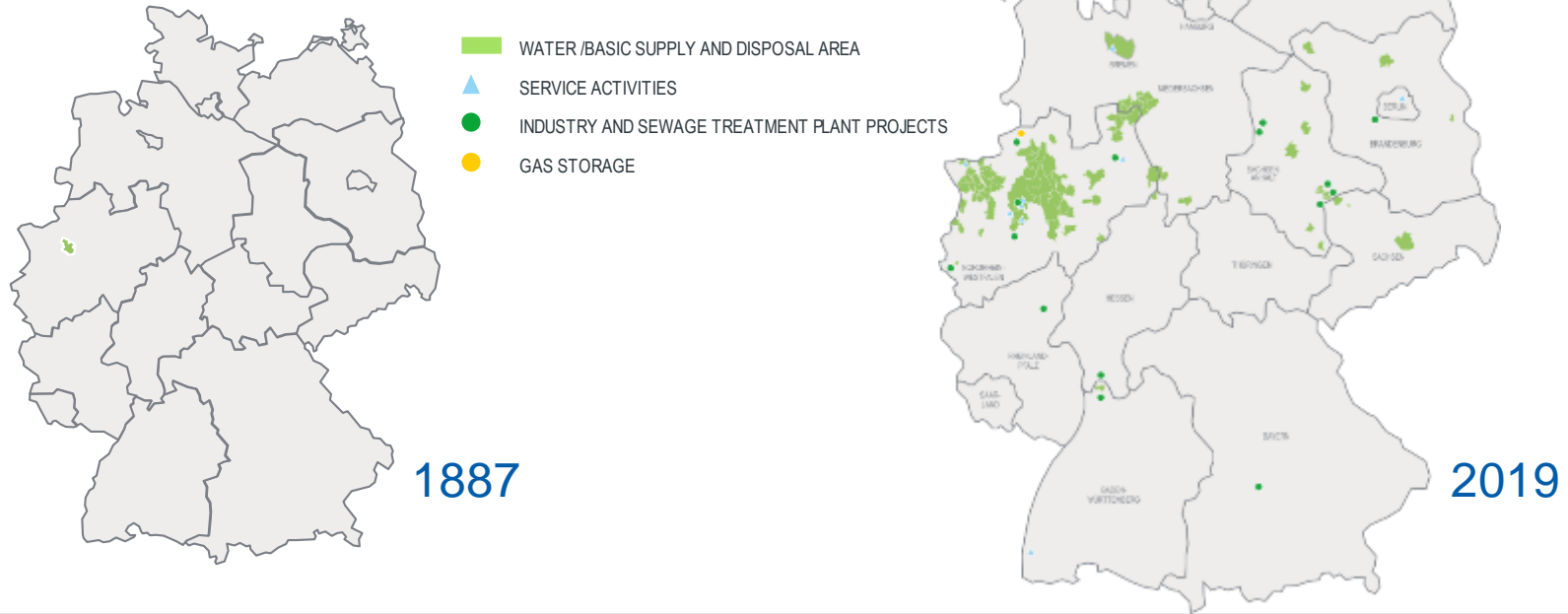
# WATER FOR PEOPLE AND INDUSTRY

THE COMPANY WAS FOUNDED IN 1887 AS WATERWORKS FOR THE NORTHERN WESTPHALIAN COAL MINING REGION





# DEVELOPMENT SUPPLY AREAS 1887 – 2019



# GELSENWASSER HEAD OFFICE

GELSENKIRCHEN



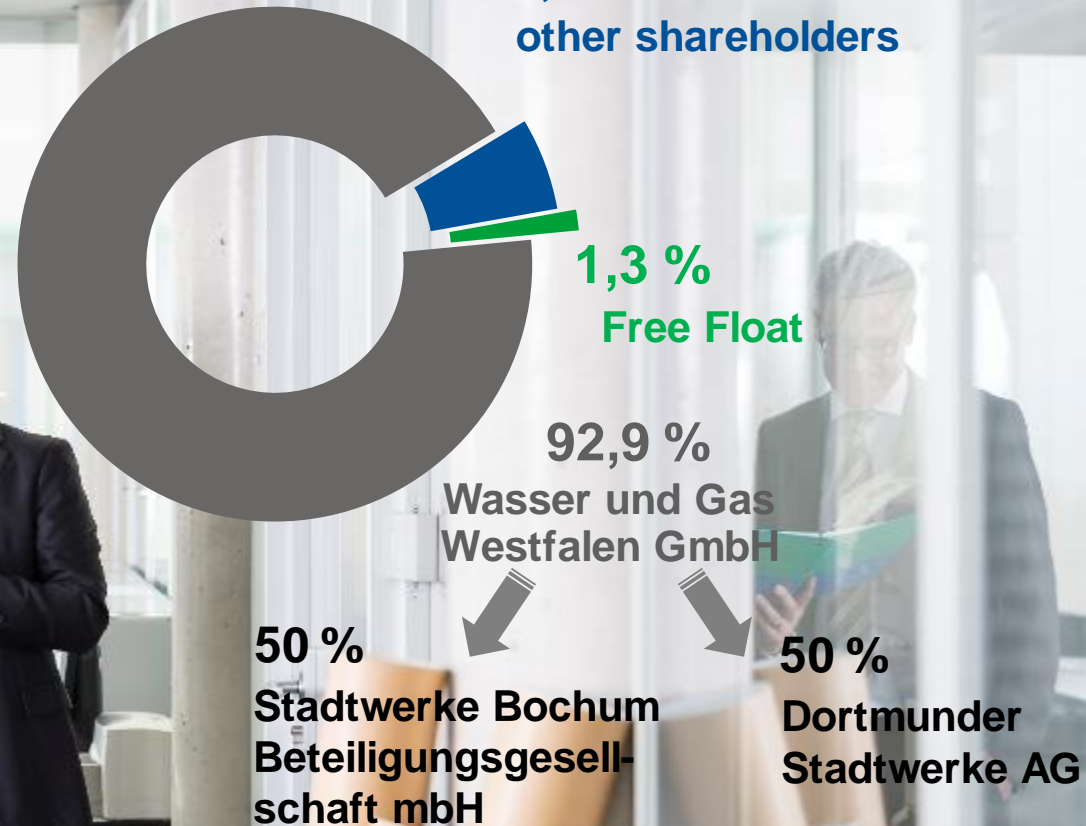


# HALTERN WATERWORKS



# SHAREHOLDERS

GELSENWASSER AG





# FACTS AND FIGURES 2019

## KONZERN (2019)

Revenue	1.938,8	m €
EBIT	128,6	m €
Employees	1.579	
Water output	237,2	m m <sup>3</sup>
Natural gas output	75.446	m kWh
Waste water quantity	6,2	m m <sup>3</sup>
Electricity output	2.525	m kWh
Municipal utilities		



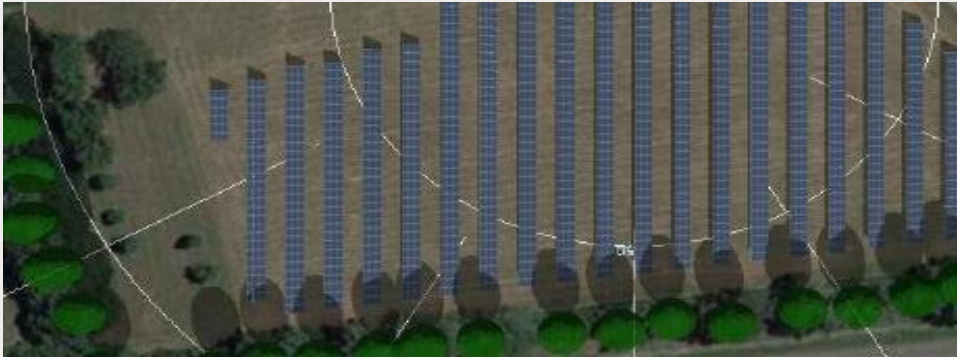
# WINDENERGY

- › Project preliminary design
- › Approval planning
- › Construction
- › Tendering and awarding
- › Construction supervision
- › Operation
- › Technical and commercial management



# SOLAR POWER

- › Roof installations
- › Development of individual concepts, e.g. self-sufficiency, contracting





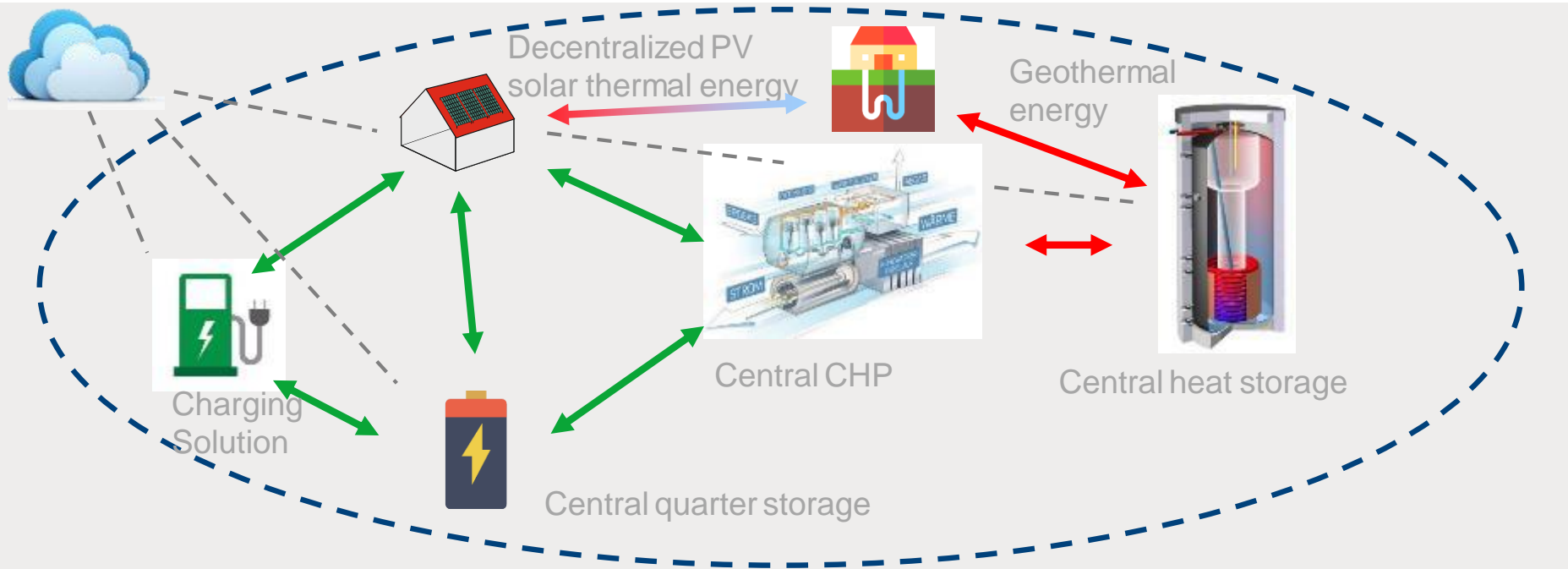
# E-MOBILITY

- › Municipal electric mobility and charging infrastructure concepts
- › Product and service development
- › Charging solutions (Wallbox, Charging Stations)
- › Contracting offer
- › Operations
- › Technical and commercial management
- ›



# ENERGETIC QUARTER SOLUTIONS

AREA NETWORKS - ELECTRICITY, HEAT, COMMUNICATION





A close-up photograph of a vibrant green leaf with several clear, glistening water droplets of varying sizes. The background is a soft-focus green, creating a fresh and natural atmosphere.

THANK YOU



**GELSENWASSER**