




# Swedish agriculture and the biogas market

Ulf Jobacker, Enterprise & entrepreneur development renewable energy  
Federation of Swedish farmers



## Today's subject: swedish agriculture and the biogas market

1. Basic facts about the Federation of Swedish Farmers, LRF
2. Potential(s)
3. So far so good, and what's next?
4. What we think is necessary to start new biogas reactors
5. The immature and frozen market



# Our history





## LRF's Vision

Making the countryside grow...

The green industry has a key and leading role with respect to growth, profitability and attraction in a sustainable society.





## LRF's Mission

LRF will contribute to the development of companies and business people whose operations are based on farming and forestry, so that individual members can realise their goals in terms of profitability, growth and quality of life

# This is LRF – The Group



# Potential(s)

Total biogas production today is 1,5 TWh

14 % of all farmers want to invest in biogas production

More than 5 000 farmers have manure generated from animal production

eon, Swedish Gas Association (Energigas Sverige) and LRF forecast a production potential of 8.1 TWh by 2020



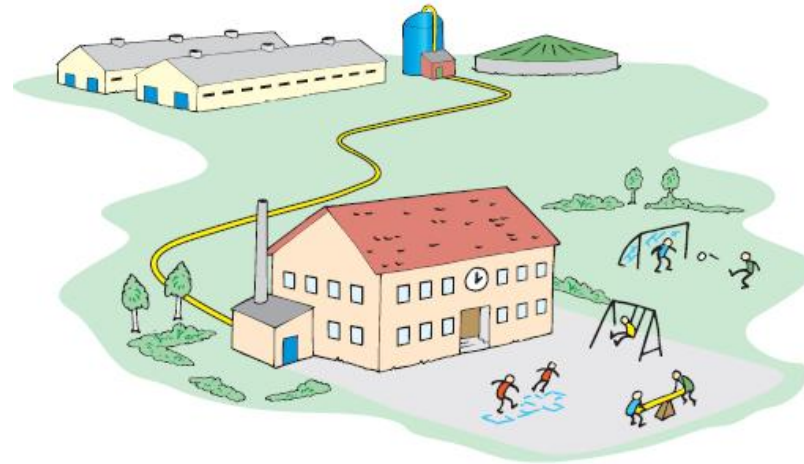


LRF is a member of Energigas Sverige  
(Swedish Gas Association) with a mission to

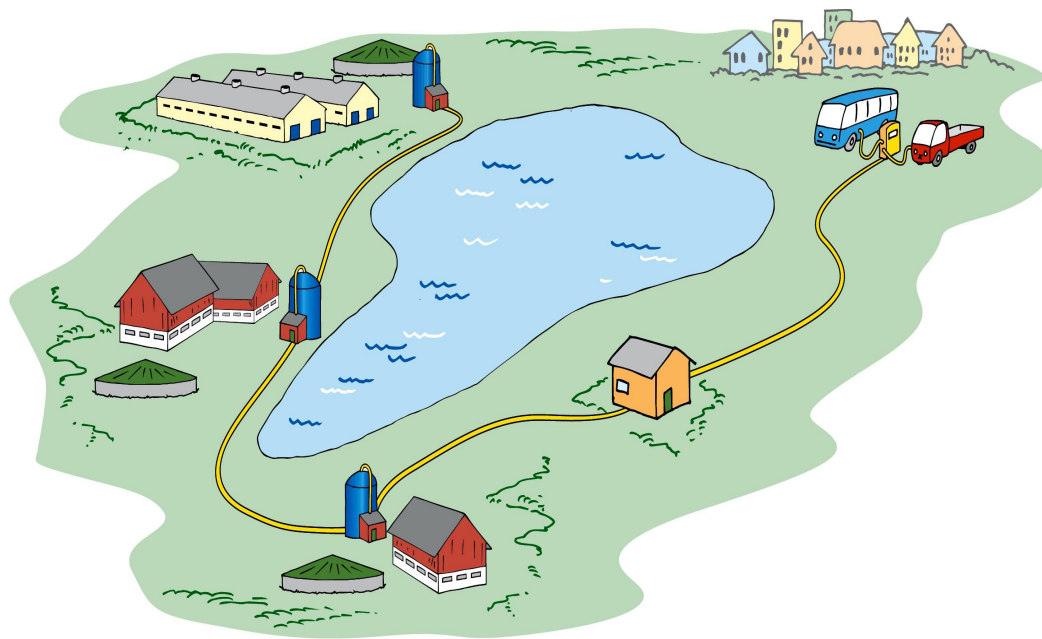
1. promote sound energy policy
2. disseminate knowledge on energy emissions
3. develop security and technology issues

## What has been done so far?

- Tax exemption for biofuels
- The Pumping Act
- Investment support of 30 % for manure-based biogas production amounting to SEK 200 million over the period 2009 - 2013.
- Electricity certificates
- Support for the development of new technology amounting to SEK 150 million over the period 2009 - 2011
- Benefit value for environmental cars
- Support for biogas filling stations



# What we know is coming...



- A national biogas strategy
- The National Renewable Energy Action Plan, end of June




# What we think is necessary in order to increase biogas production in Sweden

## Targets

- The target of a 10% use of biofuels is a very low target that has a negative impact on investments, technical development and the production and consumption of biofuels. Especially if the government is serious about having a fossil-free vehicle fleet by 2030!
- LRF, in co-operation with the the Swedish Society for Nature Conservation (SSNC), Svenska Naturskyddsföreningen and Anders Wijkman, Vice chairman of the Tällberg Foundation, through the initiative of fornybart.nu ([www.fornybart.nu](http://www.fornybart.nu)), proposes a target of 20 % renewables in the transport sector by 2020.

## Means of economic control

- The present means of economic control must continue to be applied in the future. Say no to quota systems
- Biofuels should be tax-free
- Introduce a planning target of 10 TWh of biogas by the year 2020

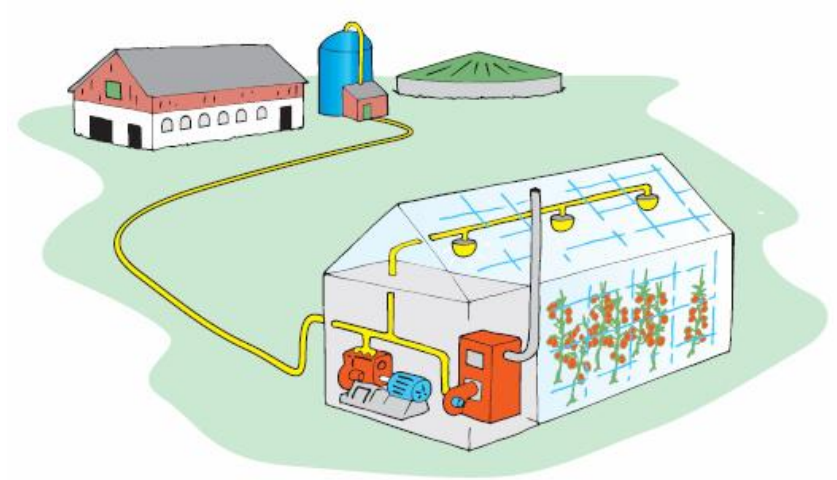


# What we think is necessary to start new biogas reactors

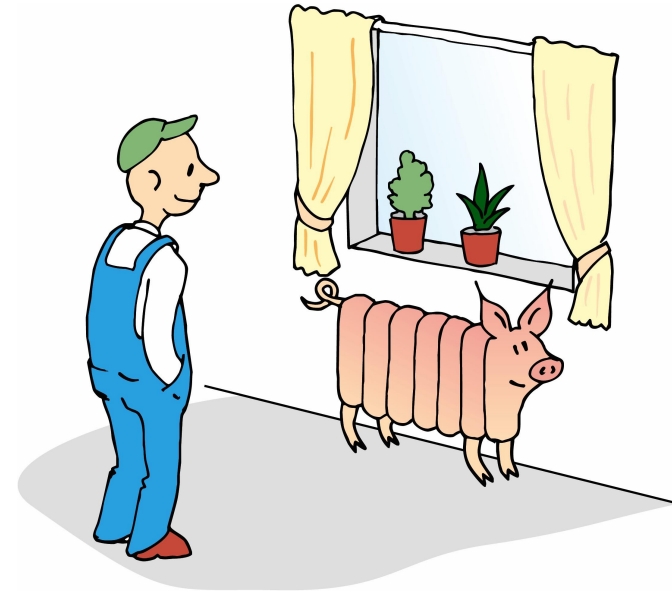
- Increase investment funding to 40 % and 50 % (already 40 % in northern Sweden). Increase investment limitation per enterprise
- New investment funding for production, upgrading, local networks and biogas filling stations
- Increase research, development and demonstration support for small-scale upgrading and dehydration processes
- Establish a planning target of 10 TWh biogas by 2020

# Is all this really necessary?


- In 2009, the farmers were waiting for investment rules
- In 2010, everyone in the energy sector is waiting for the national biogas strategy
- Everyone is waiting for higher oil prices to promote competitiveness for renewables.....



What happens in  
an immature and  
frozen market?




- *In an immature market,  
the political decisions  
**ARE** (an important part of) **the  
market***



## What is LRF doing in an immature and frozen *but slowly defrosting* market?

- A market analysis project
- The LRF energy strategy
- Activities within R&D, energy policy and business development

And as they say in Denmark: Things take time  
(ting tar tid)



# What is LRF doing in an immature and frozen *but slowly defrosting* market?

In co-operation with the Swedish Board of Agriculture (Jordbruksverket) we intend to start a

Consultancy programme with subsidized guidance in two "guidance packs":

Alt. 1, Does your farm have the necessary potential? (4 hrs guidance)

Alt. 2, Business development (max 23 hrs guidance)



## Biogasaffärer på gården

- för dig som vill undersöka möjligheterna med biogas

Du vet väl att det finns ett investeringsstöd för biogas-anläggningar. Läs mer på [www.jordbruksverket.se](http://www.jordbruksverket.se)



Thank you for your kind attention!

[ulf.jobacker@lrf.se](mailto:ulf.jobacker@lrf.se)

Entrepreneur and entrepreneurship development renewable  
energy

Dept. of Development and Analysis, Energy entrepreneurship  
and environment unit

Federation of Swedish Farmers, [www.lrf.se](http://www.lrf.se)

tel. +46 8 787 54 03